

Accordi 7sus, cosa sono e come usarli?

Groove the Harmony

Vittorio Distefano

www.vittoriodistefano.jimdo.com

Standard tuning

♩ = 120

Es.1 - II V I Maggiore

Dm7 **G7** **Cmaj7**

el.guit.

TAB: 5 6 5 5 | 3 4 3 3 | 5 4 5 3 | (5) (4) (5) (3)

(Dm7/G) **G7sus4add13** **G7add13** **Cmaj7**

TAB: 5 5 3 3 | 5 4 3 3 | 5 4 5 3 | (5) (4) (5) (3)

G13sus **G7(b9 b13)** **Cmaj13**

TAB: 12 10 10 10 | 11 10 9 10 | 10 10 9 9 | (10) (10) (9) (8)

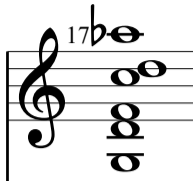
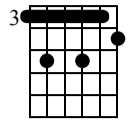
Es.2 - II V I Minore

D^ø **G7** **Cm7**

TAB: 6 5 6 5 | 3 4 3 3 | 4 3 5 3 | (4) (3) (5) (3)

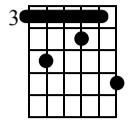
(DØ/G)

G7sus4(b9)



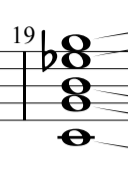
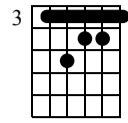
TAB 4 3 5 3 5 3

G7(#9)



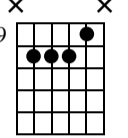
TAB 6 3 4 3 5 3

Cm(maj7)



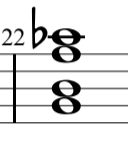
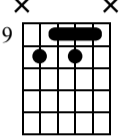
TAB 3 4 4 5 3

G7sus4(b9)



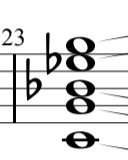
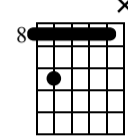
TAB 9 10 10 10

G7(b9)



TAB 9 10 9 10

Cm7



TAB 8 8 8 10 8